



Signal

**The Off-Line App for
Android Devices**



Signal

Requirements to download the Android App

You will need an Android Tablet with the following spec:

- . Android version: 5.0 +**
- . Installation memory: 30mb**
- . Cache memory: 500mb**
- . RAM memory: 4 GB + (Recommended to use: 4-6GB)**



Signal

Installing the App

1) Go to Google Play Store



1) Search for 'Stoplight Mobile' (version 1.20.3)



2) Install the App



Stoplight Mobile
Poverty Stoplight

Install



Enter your Username and Password

- When you open the App you see the familiar login screen



Welcome back!

Let's get started...

USERNAME

PASSWORD

Login



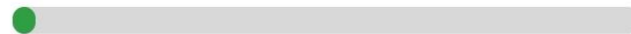
On first use, it can take a few minutes for the App to 'prepare'

We are preparing the app.

1 Surveys cached ✓

0 Families cached ✓

Images 3%





Now you can begin

☰ Stoplight Mobile

The interface shows a central illustration of a wooden cabin with a chimney, surrounded by trees. In front of the cabin is a white circular icon of a person's face. Below this is the text "0 Families". Surrounding the cabin are several colored circles: a red circle at the top left, a yellow circle at the top right, a red circle at the bottom left, and a yellow circle at the bottom right. Below the cabin, there are three colored circles with labels: a green circle labeled "Green", a yellow circle labeled "Yellow", and a red circle labeled "Red".

0 Families

Green Yellow Red

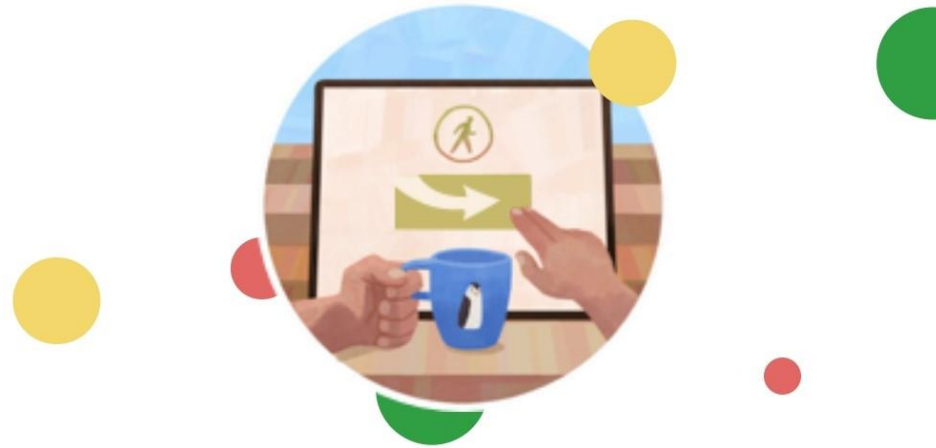
[Begin Stoplight survey](#)



Signal

Select 'United Kingdom - Signal'

☰ **Begin Stoplight survey**



United Kingdom - Signal

www.clearsignal.org



Includes T & C and Privacy Policy as usual...



Terms & Conditions



Please read carefully before using this application.

This site is provided by the Stoplight and its use is subject to the following Terms and Conditions:

1. Your access and/or use of the web survey and/or app constitutes acceptance of these Terms and Conditions.



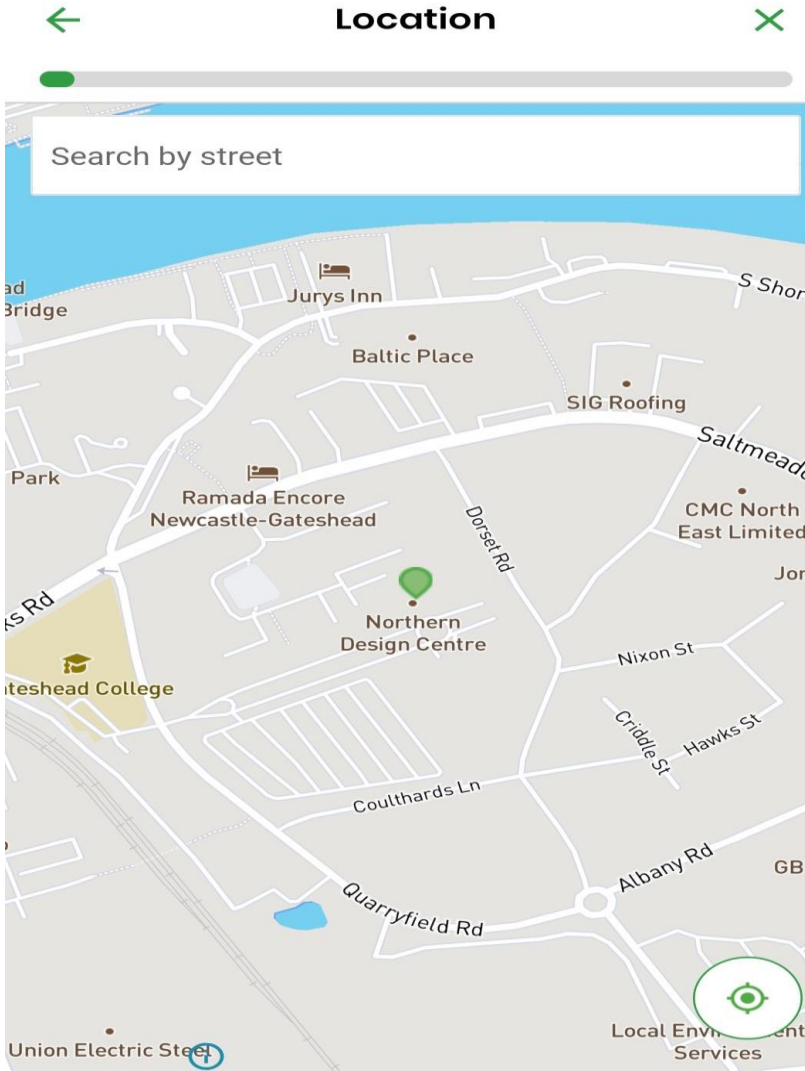
...and the personal details

A screenshot of a mobile application form titled 'Primary participant'. The form is displayed on a white background with a green header bar at the top containing a back arrow on the left and a close 'X' on the right. Below the header is a progress bar with a small green segment on the left. The main content area features a yellow circle icon and the text 'Tell us about yourself!'. Below this is a red asterisk and the label 'First name *'. A red error message 'This field is required' is positioned below the label. The form contains several input fields: 'Last name *', 'Select gender *' (with a dropdown arrow), 'Date of birth *' (with a dropdown arrow), 'Document type *' (with a dropdown arrow), and 'Document number *'. At the bottom of the form is a prominent green button labeled 'Continue'. The very bottom of the screen shows a grey navigation bar with three icons: a hamburger menu, a circle, and a back arrow.



Signal

Location



Select the location. Remember to turn on the GPS on your device.

- If you are online and with the GPS connected, the app will direct you to your live location.
- If you are offline (with GPS) you will manually select your location.
- If you are offline and without the GPS connected, the app will not be able to identify your location. Other fields for extra information will be displayed like: Country of residence, Post code and Street description.



Signal

The Indicators

- Turn your device **horizontally** to have a better visualisation of the images and texts.

← INCOME AND EMPLOYMENT Family savings ×

We save and we can cope with emergencies; we have at least 3 months of expenses set aside. We don't have a lot of debt.

We have some money to save, but we can't save too often because debt and bills are hard to cope with.

In our household we don't have money to save, or for emergencies. We have lots of debt and can't keep up with our bills.

Skip this question



Process of choosing Priorities is the same....

← Your Life Map ×

To complete your Life Map...
Create your most important priorities by clicking on the red and yellow indicators!

All indicators ▾

INCOME AND EMPLOYMENT

- Income Above the Poverty Line >
- Stable Income >
- Credit Access >**
- Family Savings >
- Varied Sources of Income >

Continue

← Your Life Map ×

To complete your Life Map...
Create your most important priorities by clicking on the red and yellow indicators!

All indicators ▾

INCOME AND EMPLOYMENT

Credit Access

Why don't you have it?

What will you do to get it?

How many months will it take? * ▾

Make this a priority!



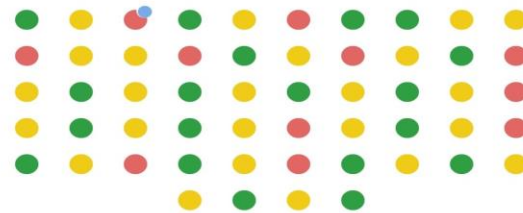


...as are the options for sending, downloading or printing

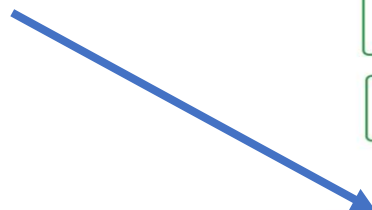
← Thank you!

Congratulations!

You have completed the survey. Now, just click finish!



CLICK 'FINISH'



Download Print

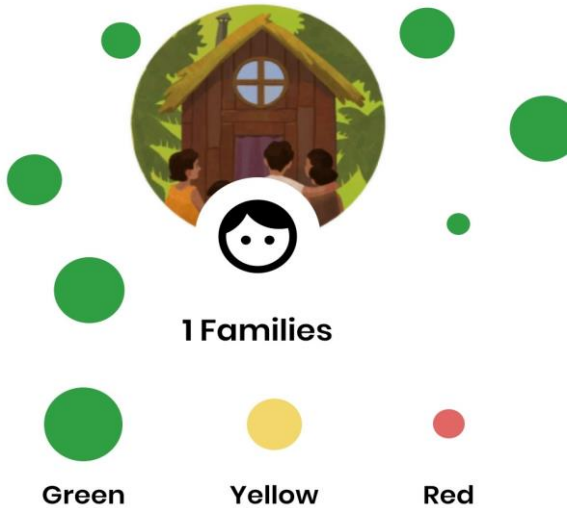
Email Whatsapp

Finish



You can now begin another survey

Stoplight Mobile



Begin Stoplight survey

Surveys ▾

Dec 22, 2021
be
Sync pending

NB: The surveys will only start syncing if you're connected to the internet. If you are offline, **do not log out of your session if the surveys are not synced.** The app can store the unsynced surveys until it finds an internet connection.

Here you will see completed surveys which have been synced with your account and which will be synced when you are next on-line.



Surveys are synched to your account

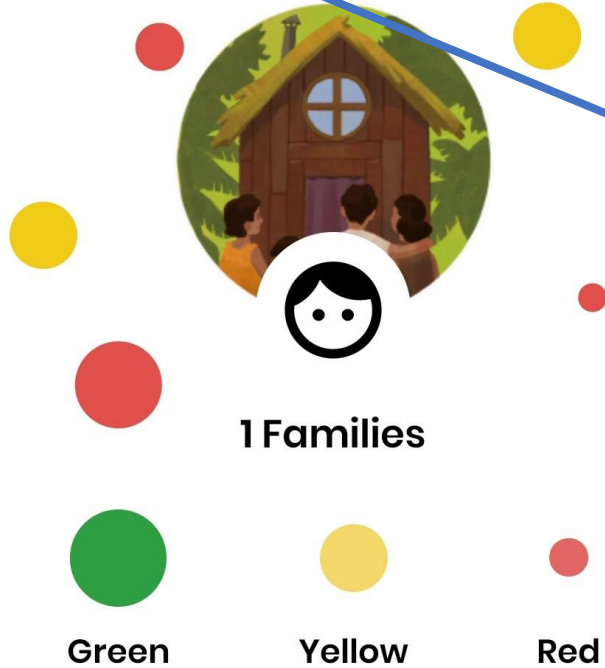
When the synch is complete, the surveys will appear on your web dashboard 'activity feed'. This means that the data is now held within your account

The screenshot shows the 'Activity Feed' section of the Signal web dashboard. At the top, there are navigation tabs for 'Surveys', 'Households', and 'Map'. The 'Activity Feed' is a list of survey events, each with a green circular icon containing a person silhouette. The first entry reads: 'B W took a baseline survey (Nº1)! Facilitator: Signal Origin: WEB 6 days ago'. The second entry reads: '[redacted] took a baseline survey (Nº1)! Facilitator: Signal Origin: WEB 6 days ago'. The third entry reads: 'S H took a baseline survey (Nº1)! Facilitator: Signal'. A blue arrow points from the text box above to the 'Surveys' tab.

The screenshot shows the main view of the Signal web dashboard. At the top, there are navigation tabs for 'Surveys', 'Households', and 'Map'. The main content area features a 'Welcome signal!' message, a map with several colored dots (yellow, green, red), and a 'Supp' link. At the bottom, there are two summary cards: a home icon with '373 families' and a stoplight icon with '411 Stoplights'.

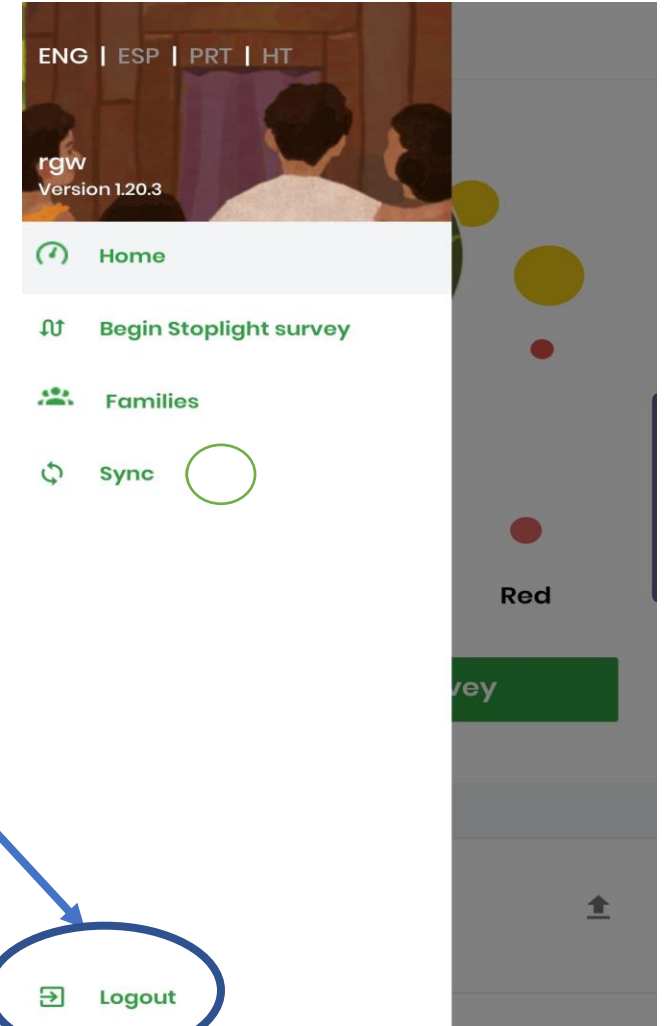


Logging off once synching is complete



1) Click on Menu Bar

2) Click on 'Logout'



<https://clearsignal.org/>



Signal

Thank You!

**For enquiries or a personal demo email us at;
contact@clearsignal.org**